



AROHA KNITS
TRANSFORM YOUR YARN



KAKA KĪREHE SHAWL

Designed by Françoise Danoy

ABOUT

The Kaka Kīrehe Shawl is a collaborative making between Aroha Knits and June Cashmere. Kaka Kīrehe is Maori for "animal fibre", named after the yarn itself, as June is Kyrgyz for the same. The shawl is an elegant asymmetrical shape, alternating between sections of stockinette and a slip-stitch cable motif pattern that can be worked with the usage of a cable needle.

Because of its repetitive nature, adventurous beginners will be able to knit this shawl with confidence as they are able to practice the motif several times over the course of the shawl, find the rhythm in the stitches and learn a new technique. More experienced knitters who enjoy the melodic nature of stockinette, with bursts of a more engaging stitch pattern, will find this to be a meditative project, easy to pick up and take on the go, relaxing enough for a quiet evening in front of the tv.

While it is recommended to choose a solid color for the slip stitch motif section in order for it to shine, the simplicity of the stockinette stitch allows you the creative freedom to be as imaginative with your color way choices as you like, so you can transform your yarn into a piece of art.

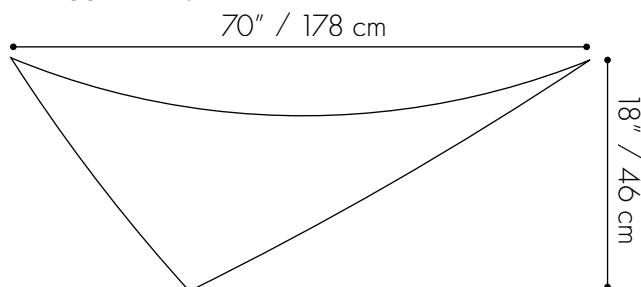
Needle: Size 4 (3.5 mm) on 24" (60cm) or 32" (80cm) circular needle. Circular needle is recommended to accommodate the large amount of sts.

Yarns Used: June Cashmere Lace Weight (Light Fingering / 3 ply ; 100% Cashmere goat ; 308 yards / 280 meters / 50 grams). 2 skeins in Slate (MC), 1 skein in Scarlet (CC).

Yardage: 575 - 616 yards / 525 - 563 meters in MC, 280 - 308 yards / 256 - 280 meters in CC.

Gauge: 24 sts and 36 rows = 4" / 10 cm. Gauge is not crucial to this project but different gauges will affect size and amount of yarns used.

Final Measurements: Measurements will vary based on gauge and how aggressively the shawl is blocked. See the schematic below.



For pattern support, email Frenchie at fdanoy@arohaknits.com.

Copyright 2016. All Rights Reserved.



STITCH ABBREVIATIONS

K - knit
 P - purl
 Kfb - knit front and back
 Pfb - purl front and back
 Sl 1 - slip stitch knit wise with yarn in back
 Sl 1 wyif - slip stitch purl wise with yarn in front
 Sl 2 - slip two stitches knit wise with yarn in back, one by one
 Sl 2 wyif - slip two stitches purl wise with yarn in front, one by one

P2tog - purl two together
 St(s) – stitch(es)
 1/1 LC - slip one stitch to cable needle, hold in front, k1, k1 from cable needle
 1/1 RC - slip one stitch to cable needle, hold in back, k1, k1 from cable needle
 MC - main color (or background yarn)
 CC - contrast color (or accent yarn)
 CO - cast on
 BO - bind off

PATTERN NOTES

For high-res images of the shawl and video tutorials on working the cable stitches without a cable needle and making tassels, visit www.arohaknits.com/kaka-kirehe-shawl.

To Work the 1/1 RC Stitch Without a Cable

Needle: slip the first two stitches onto the right needle purl wise with the yarn in the back. Then slip the two stitches off the needle, holding them between your fingers. Slip the accent yarn on the right needle, the background yarn onto the left needle, then slip the accent yarn back onto the left needle. Knit the two stitches to finish this cable.

To Work the 1/1 LC Stitch Without a Cable

Needle: slip the first two stitches onto the right needle purl wise with the yarn in the back. Then slip the two stitches off the needle, holding them between your fingers. Slip the background yarn onto the right needle, the accent yarn onto the left needle, then slip the background yarn back onto the left needle. Knit the two stitches to finish this cable.

To Work the I-Cord BO: CO three stitches onto the left needle, k2, k2tog tbl (1 shawl stitch bound off), transfer the three sts back onto the left needle, continue until all sts are bound off, then k3tog.

PATTERN STITCHES

STOCKINETTE STITCH

Row 1 (RS): Sl 1, kfb, k until end. (1 st increase)

Row 2 (WS): Sl 1 wyif, p2tog, p until last 2 sts, pfb, p1.

SLIP STITCH MOTIF

Row 1 (RS): Sl 1, kfb, k until end.

Row 2 (WS): Sl 1 wyif, p2tog, k13, p2, k2, p2, k3, *k9, p2, k2, p2, k3; rep from * until last 3 sts, k1, pfb, p1.

Row 3: Sl 1, kfb, k2, *k3, sl 2, k2, sl 2, k9; rep from * until last 24 sts, k3, sl 2, k2, sl 2, k15.

Row 4: Sl 1 wyif, p2tog, p12, sl 2 wyif, p2, sl 2 wyif, p3, *p9, sl 2 wyif, p2, sl 2 wyif, p3; rep from * until last 5 sts, p3, pfb, p1.

Row 5: Sl 1, kfb, k4, *k2, (1/1 RC, 1/1 LC) x2, k8; rep from * until last 23 sts, k2, (1/1 RC, 1/1 LC) x2, k13.

Row 6: Sl 1 wyif, p2tog, k9, (p2, k2) x2, p2, k1, *k7, (p2, k2) x2, p2, k1; rep from * until last 7 sts, k5, pfb, p1.

Row 7: Sl 1, kfb, k6, *k1, (sl 2, k2) x2, sl 2, k7; rep from * until last 22 sts, k1, (sl 2, k2) x2, sl 2, k11.

Row 8: Sl 1 wyif, p2tog, p8, (sl 2 wyif, p2) x2, sl 2 wyif, p1, *p7, (sl 2 wyif, p2) x2, sl 2 wyif, p1; rep from * until last 10 sts, p8, pfb, p1.

Row 9: Sl 1, kfb, k8, *(1/1 RC, 1/1 LC) x 3, k6; rep from * until last 21 sts, (1/1 RC, 1/1 LC) x 3, k9.

Row 10: Sl 1 wyif, p2tog, k6, p1, (k2, p2) x2, k2, p1, *k6, p1, (k2, p2) x2, k2, p1 ; rep from * until last 11 sts, k9, pfb, p1.

Row 11: Sl 1, kfb, k10, *sl 1, (k2, sl 2) x2, k2, sl 1, k6 ; rep from * until last 20 sts, sl 1, (k2, sl 2) x2, k2, sl 1, k8.

Row 12: Sl 1 wyif, p2tog, p5, sl 1 wyif, (p2, sl 2 wyif) x2, p2, sl 1 wyif, *p6, sl 1 wyif, (p2, sl 2 wyif) x2, p2, sl 1 wyif ; rep from * until last 13 sts, p11, pfb, p1.

Row 13: Sl 1, kfb, k12, *(1/1 LC, 1/1 RC) x 3, k6 ; rep from * until last 19 sts, (1/1 LC, 1/1 RC) x 3, k7.

Row 14: Sl 1 wyif, p2tog, k6, p1, k2, p2, k2, p1, k2, *k8, p1, k2, p2, k2, p1, k2 ; rep from * until last 15 sts, k13, pfb, p1.

Row 15: Sl 1, kfb, k14, *k2, sl 1, k2, sl 2, k2, sl 1, k8 ; rep from * until last 18 sts, k2, sl 1, k2, sl 2, k2, sl 1, k8.

Row 16: Sl 1 wyif, p2tog, p5, sl 1 wyif, p2, sl 2 wyif, p2, sl 1 wyif, p2, *p8, sl 1 wyif, p2, sl 2 wyif, p2, sl 1 wyif, p2 ; rep from * until last 17 sts, p15, pfb, p1.

Row 17: Sl 1, kfb, k16, *k2, (1/1 LC, 1/1 RC) x2, k8 ; rep from * until last 17 sts, k2, (1/1 LC, 1/1 RC) x2, k7.

Row 18: Sl 1 wyif, p2tog, k5, p2, k2, p2, k3, *k9, p2, k2, p2, k3 ; rep from * until last 19 sts, k17, pfb, p1.

PATTERN

CO 5 sts in MC yarn. Work in Stockinette Stitch Pattern for 44 rows (after working a WS you will have 27 sts on the needle). Drop MC yarn and attach CC yarn. You will alternate between the CC and MC yarns every RS row. Do not cut yarns to alternate, just drop and pick up the working yarn as needed. Then work the first slip stitch motif as written below (chart is on page 5):

Row 1 (RS): Sl 1, kfb, k25. (28 sts)

Row 2 (WS): Sl 1 wyif, p2tog, k13, p2, k2, p2, k4, pfb, p1.

Row 3: Sl 1, kfb, k5, sl 2, k2, sl 2, k15. (29 sts)

Row 4: Sl 1 wyif, p2tog, p12, sl 2 wyif, p2, sl 2 wyif, p6, pfb, p1.

Row 5: Sl 1, kfb, k6, (1/1 RC, 1/1 LC) x2, k13. (30 sts)

Row 6: Sl 1 wyif, p2tog, k9, (p2, k2) x2, p2, k6, pfb, p1.

Row 7: Sl 1, kfb, k7, (sl 2, k2) x2, sl 2, k11. (31 sts)

Row 8: Sl 1 wyif, p2tog, p8, (sl 2 wyif, p2) x2, sl 2 wyif, p8, pfb, p1.

Row 9: Sl 1, kfb, k8, (1/1 RC, 1/1 LC) x 3, k9. (32 sts)

Row 10: Sl 1 wyif, p2tog, k6, p1, (k2, p2) x2, k2, p1, k9, pfb, p1.

Row 11: Sl 1, kfb, k10, sl 1, (k2, sl 2) x2, k2, sl 1, k8. (33 sts)

Row 12: Sl 1 wyif, p2tog, p5, sl 1 wyif, (p2, sl 2 wyif) x2, p2, sl 1 wyif, p11, pfb, p1.

Row 13: Sl 1, kfb, k12, (1/1 LC, 1/1 RC) x 3, k7. (34 sts)

Row 14: Sl 1 wyif, p2tog, k6, p1, k2, p2, k2, p1, k15, pfb, p1.

Row 15: Sl 1, kfb, k16, sl 1, k2, sl 2, k2, sl 1, k8. (35 sts)

Row 16: Sl 1 wyif, p2tog, p5, sl 1 wyif, p2, sl 2 wyif, p2, sl 1 wyif, p17, pfb, p1.

Row 17: Sl 1, kfb, k18, (1/1 LC, 1/1 RC) x2, k7. (36 sts)

Row 18: Sl 1 wyif, p2tog, k5, p2, k2, p2, k20, pfb, p1.

Cut CC yarn.

1) Pick up MC yarn and work in Stockinette for 18 rows.
2) Drop MC yarn, but do not cut, attach CC yarn and work Slip Stitch Motif rows [1-18] (refer to the pattern stitches section for the written instructions on page 3 or chart on page 6), alternating CC and MC yarns every RS row. Cut CC yarn after finishing row 18.

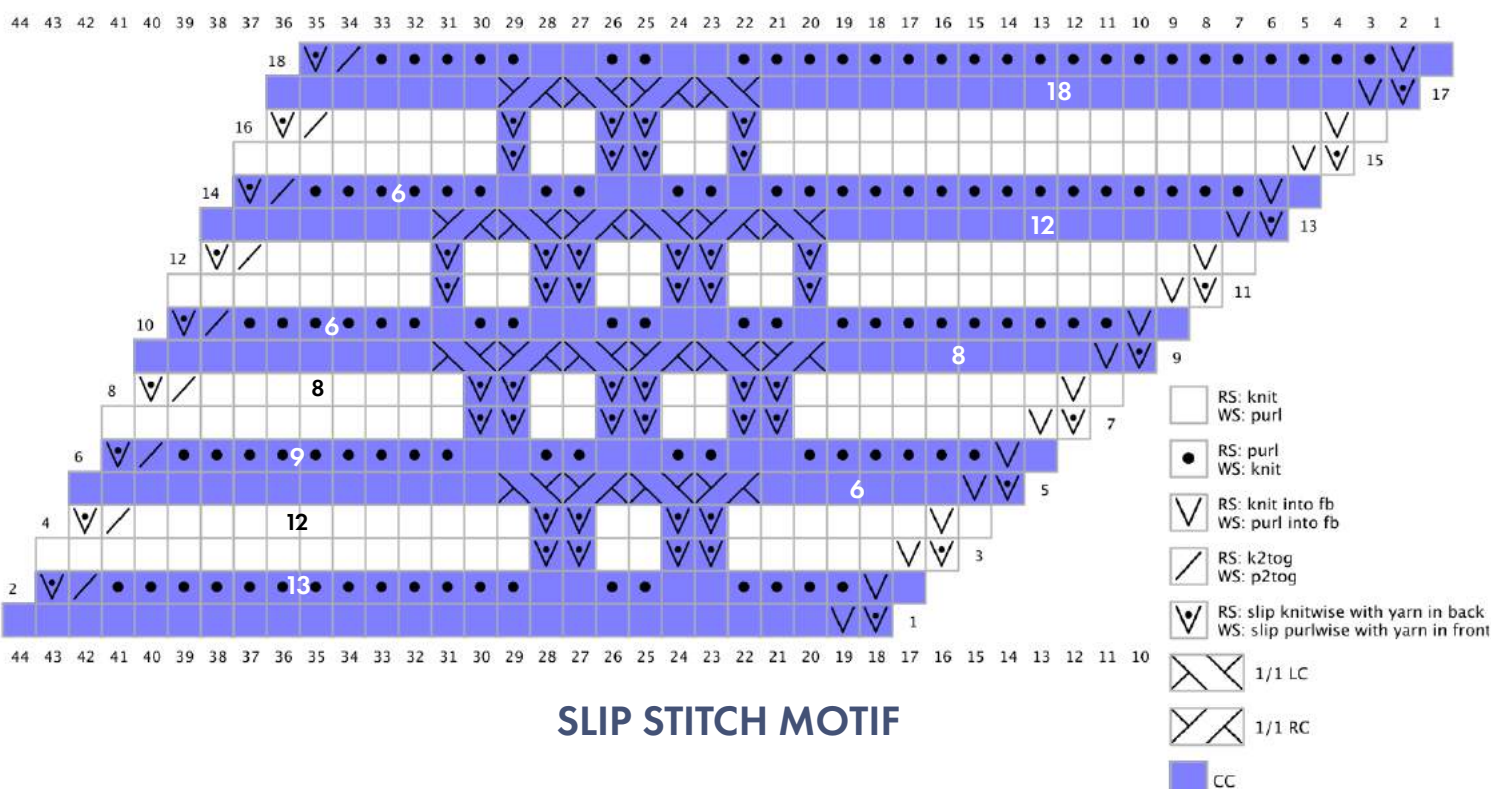
Rep Steps 1 and 2 nine times (you'll be adding a repeat of the motif each time, so after the last repeat of the Slip Stitch Motif section, you will have worked the motif 10 times across, 198 sts). View stitch counts on page 7.

In MC yarn, BO the shawl using the I-cord BO. Block shawl and weave in ends. Add tassels for extra flair! (Tutorials for I-Cord BO and tassels in pattern notes).

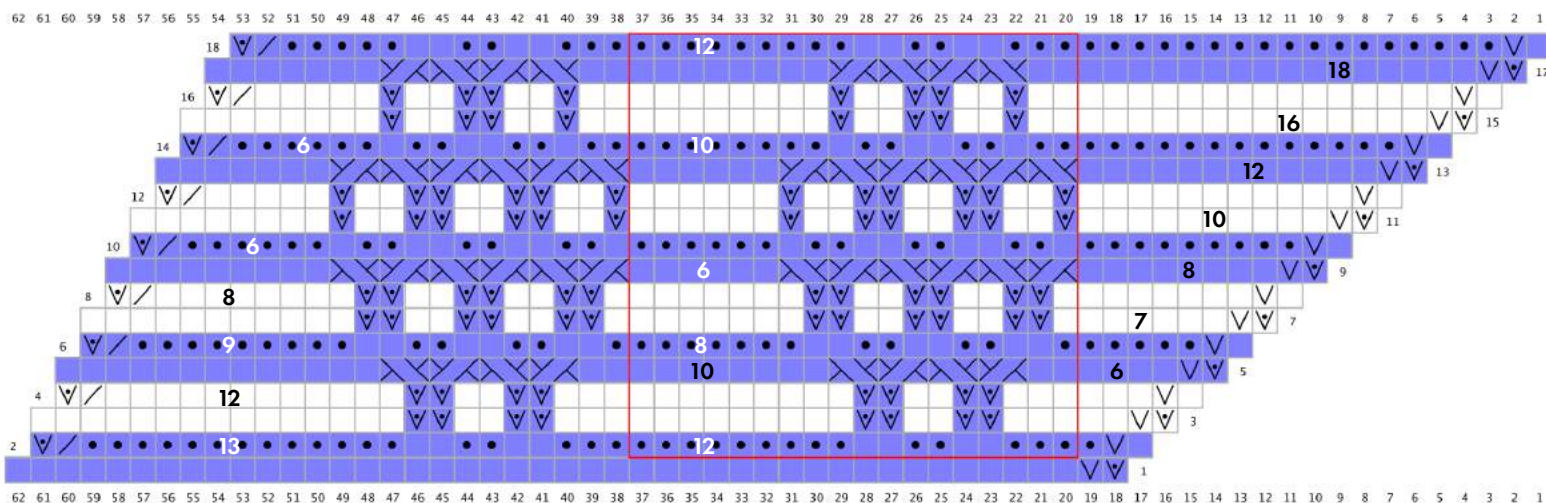
CHARTS

Because there are some long sections of knit stitches to be worked before getting to the first slipped or cabled stitch, the number of stitches to knit (or purl, depending on which row you are on) is provided for stitch counts over 5, so you don't have to count the boxes individually or flip back and forth between the charts and written instructions. This number is not included for the end of RS and WS rows, as you'll just be working the knit or purl stitch until the end (RS rows) or 2 sts from the end of the row (WS rows).

FIRST SLIP STITCH MOTIF



SLIP STITCH MOTIF



STITCH COUNTS

Stitch Count	Beginning of Section
5	Stockinette
27	Stripe Section 1
36	Stockinette
45	Stripe Section 2
54	Stockinette
63	Stripe Section 3
72	Stockinette
81	Stripe Section 4
90	Stockinette
99	Stripe Section 5
108	Stockinette
117	Stripe Section 6
126	Stockinette
135	Stripe Section 7
144	Stockinette
153	Stripe Section 8
162	Stockinette
171	Stripe Section 9
180	Stockinette
189	Stripe Section 10

SPREADING AROHA

Thank you for purchasing this pattern! Your support of independent designers means a lot to me!

If you have any questions about the pattern, don't hesitate to contact me. I enjoy receiving emails from knitters who express interest in using my patterns one way or another.

I love watching people's progress on Aroha Knits designs! Spread aroha (love) in the fiber community by...

- Using the hashtag #arohaknitsdesigns or tag @arohaknits on Instagram
- Tagging @ArohaKnits on Facebook
- Making a project page on Ravelry

PATTERNS

Do not distribute, copy or resell the pattern.

If you wish to teach a class using an Aroha Knits pattern, please purchase a copy per student.

If you wish to sell the pattern as a yarn kit, please contact me.

FINISHED OBJECTS

Once you have purchased the pattern, legally, you are allowed to do whatever you like with the finished object, despite it being copyrighted to me, Françoise Danoy and Aroha Knits. Thus, you do not need my permission to do the following:

- Donating the FOs to charity, fundraiser or donation
- Knitting as many as you want for personal use (this includes giving to friends and family)
- Selling limited amounts of FOs to close friends and family

If you wish to sell your FOs on your Etsy site, online store or on-site store, I have no (legal) power to prevent you from doing so, I only ask for credit for the design in the product description.

ABOUT THE DESIGNER



Kia Ora, magic maker! My name is Françoise, but please feel free to call me Frenchie. I'm a Franco-Maori American-Australian living in Japan, slightly obsessed with anything under the Disney brand (especially Marvel and Star Wars) and all things handmade.

My mission is to evolve, and to grow. Right now, the way I'm doing that is enabling magic-makers and fiber-lovers (like you!) to transform yarn into unique handmade pieces to boost your confidence and creativity.

How? I design knitwear designs to inspire and delight, waiting for you to add your special touch to, and offer courses and books that transform knitters into confident designers. So if you're in need of some empowerment via knitting in your life, let's ignite magic together at www.arohaknits.com.